

BMI
certified
IQ
TEST

Report

Intellectual Skills Assessment & Analysis

Visual Perception
Abstract Reasoning
Pattern Recognition
Spatial Orientation
Analytical Thinking

Name: Kobe Poole

Date: June 3, 2024

BRAIN
METRICS
INITIATIVE

IQ Research
Personality & Intelligence Assessment Tools



01 / Contents

01 / Contents	pg. 2
02 / Introduction	pg. 3
About the BMI Certified IQ Test	
- What the IQ Test measures	pg. 3
- How your score is calculated	pg. 4
03 / Assessment & Analysis	pg. 5
Your IQ Score	pg. 5
Visual Perception	pg. 6
Abstract Reasoning	pg. 8
Pattern Recognition	pg. 10
Spatial Orientation	pg. 12
Analytical Thinking	pg. 14
04 / Assessment Overview	pg. 16
05 / Put your assessment to work	pg. 17
How to best use your IQ assessment?	pg. 17
What is a Brain Training Plan?.....	pg. 17
How does it work?	pg. 18

02 /

Introduction

About the BMI Certified IQ Test

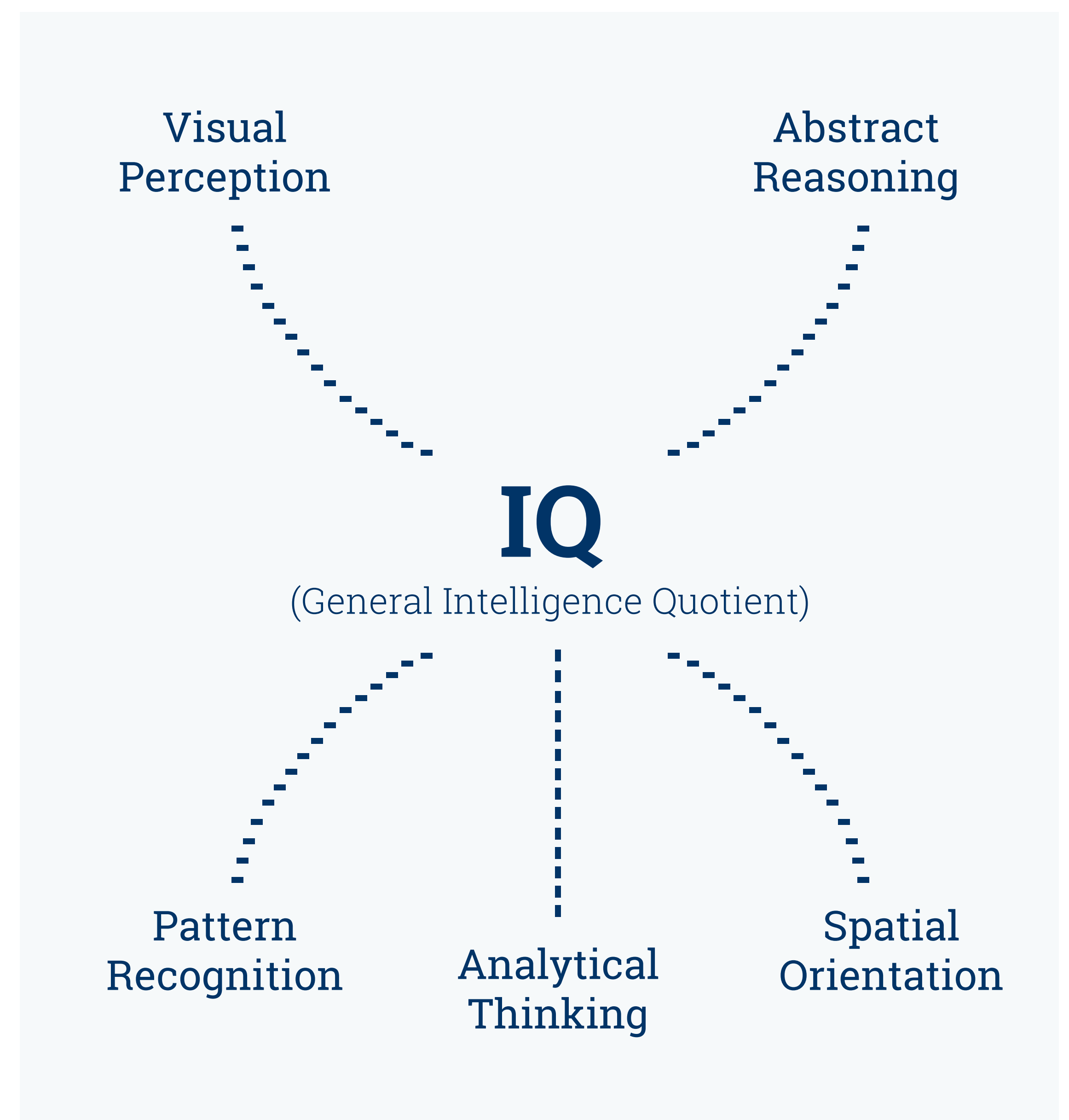
WHAT THE IQ TEST MEASURES
HOW YOUR SCORE IS CALCULATED

WHAT THE IQ TEST MEASURES

The BMI Certified IQ Test is a highly precise tool designed to accurately measure general intelligence in online environments.

The BMI Certified IQ Test, apart from accurately measuring your General Intelligence, has been structured in such a way as to also provide meaningful insights about your performance in various, distinct areas of intelligence, revealing your key strengths or weaknesses and identifying potential opportunities for improvement.

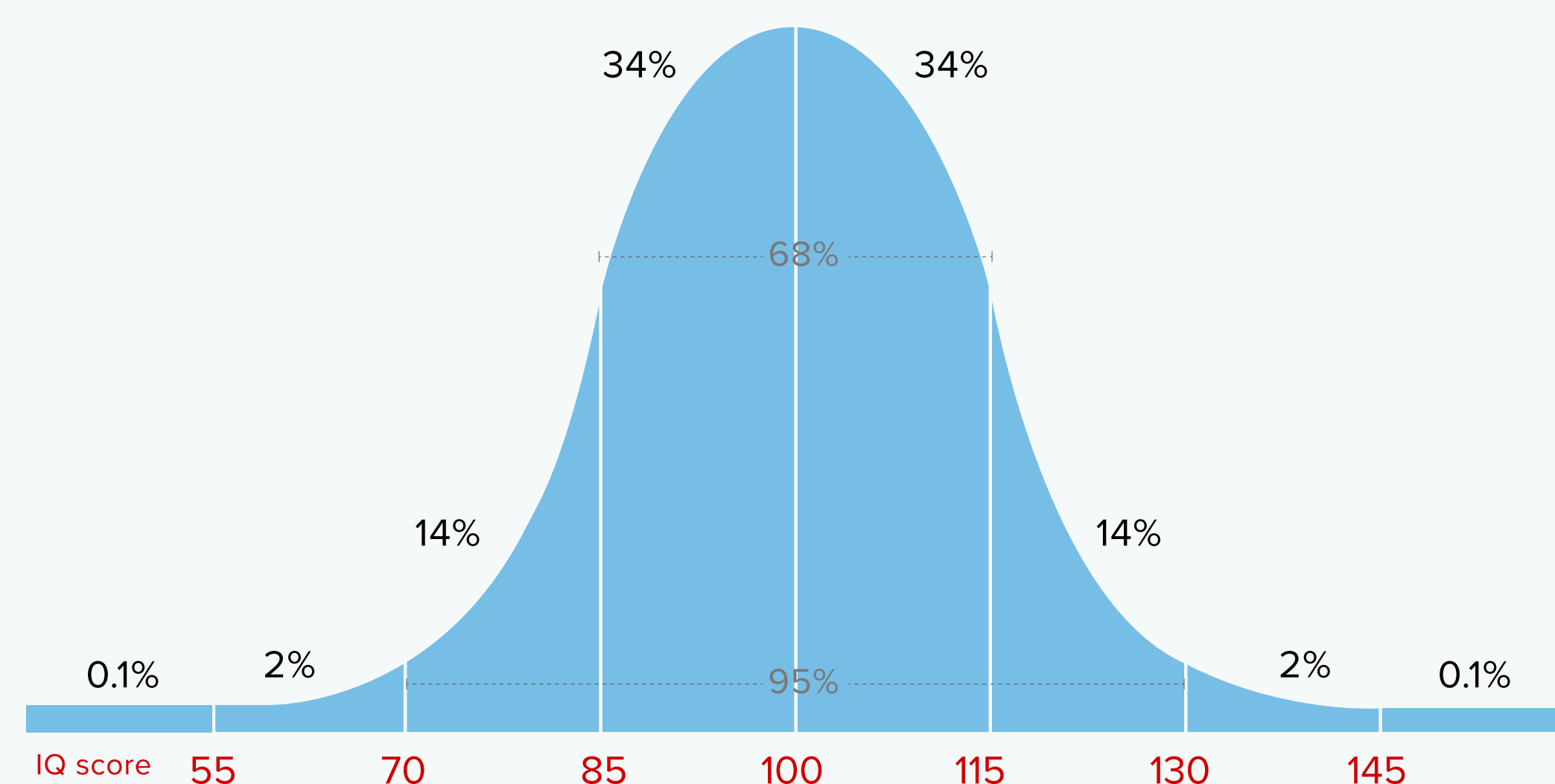
The 20 questions you have answered have been specifically designed to measure the following five aspects of human intelligence: **Visual Perception**, **Abstract Reasoning**, **Pattern Recognition**, **Spatial Orientation** and **Analytical Thinking**.



02 / Introduction

About the BMI Certified IQ Test

IQ Scores Distribution
in General Population



Below 55:	0.1%	100-114:	34%
55-69:	2%	115-129:	14%
70-84:	14%	130-144:	2%
85-99:	34%	Above 144:	0.1%

The average IQ Score is 100. Approximately 68% of the general population attains an IQ Score within the range of 85 to 115.

HOW YOUR SCORE IS CALCULATED

Once you've answered the IQ Test questions your results are compared with data from other participants in your age group who have already taken the test and then a normalized score is calculated.

Normalizing means the **average IQ score is 100**. Your score will show where you stand compared to other peers in your age group who have taken the test.

IQ scores follow a normal distribution of statistical data. Approximately 95% of the world's population have scores within two standard deviations (SD) of the mean (average IQ score), meaning that 95% of the population stand within a range of 70 to 130, and 98% are below 131.

IQ points are not percentage points. While one standard deviation is 15 points, and two SDs are 30 points, and so on, this does not imply that mental ability is linearly related to IQ, such that IQ 50 means half the cognitive ability of IQ 100.

03 /

Assessment & Analysis

Your IQ Score

110

YOUR IQ SCORE

You scored higher than

74.57 percent

of the general population

CURRENT BMI SCORES CLASSIFICATION

Above 144	Highly Gifted
130 - 144	Gifted
115 - 129	Above Average
85 - 114	Average
70 - 84	Below Average
Below 70	Lower Extreme

03 /

Assessment & Analysis

Visual Perception

ABOUT
STATISTICS
PERFORMANCE

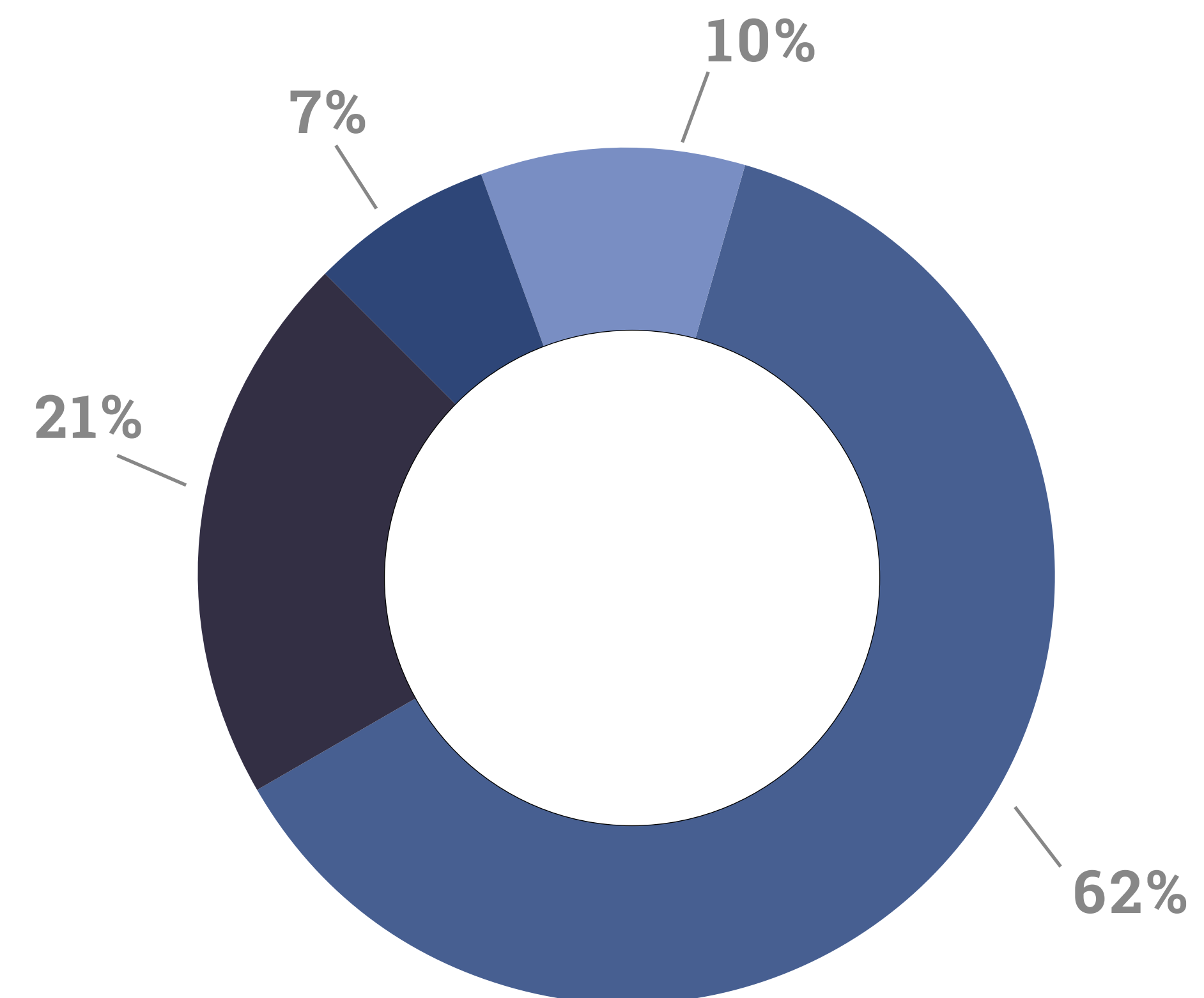
ABOUT

Visual Perception is the visual - cognitive ability which allows us to organize, process and interpret visual information input so, that we can derive understanding and meaning from what we are experiencing.

Your visual perception skills evaluation indicates how sharp is your ability to recognize even the slightest changes in forms and shapes of objects and how accurately you can determine similarities or differences based on size, colour or dimensions.

Visual perception is a key aspect of human intelligence and a core skill regarding the learning process. It is believed that people who have a well developed visual perception tend to be better and faster learners.

STATISTICS



1.1 Score Distribution in “Visual Perception” set of questions

SCORES	0% - 15% (10%)	15% - 50% (62%)	50% - 85% (21%)	85% - 100% (7%)

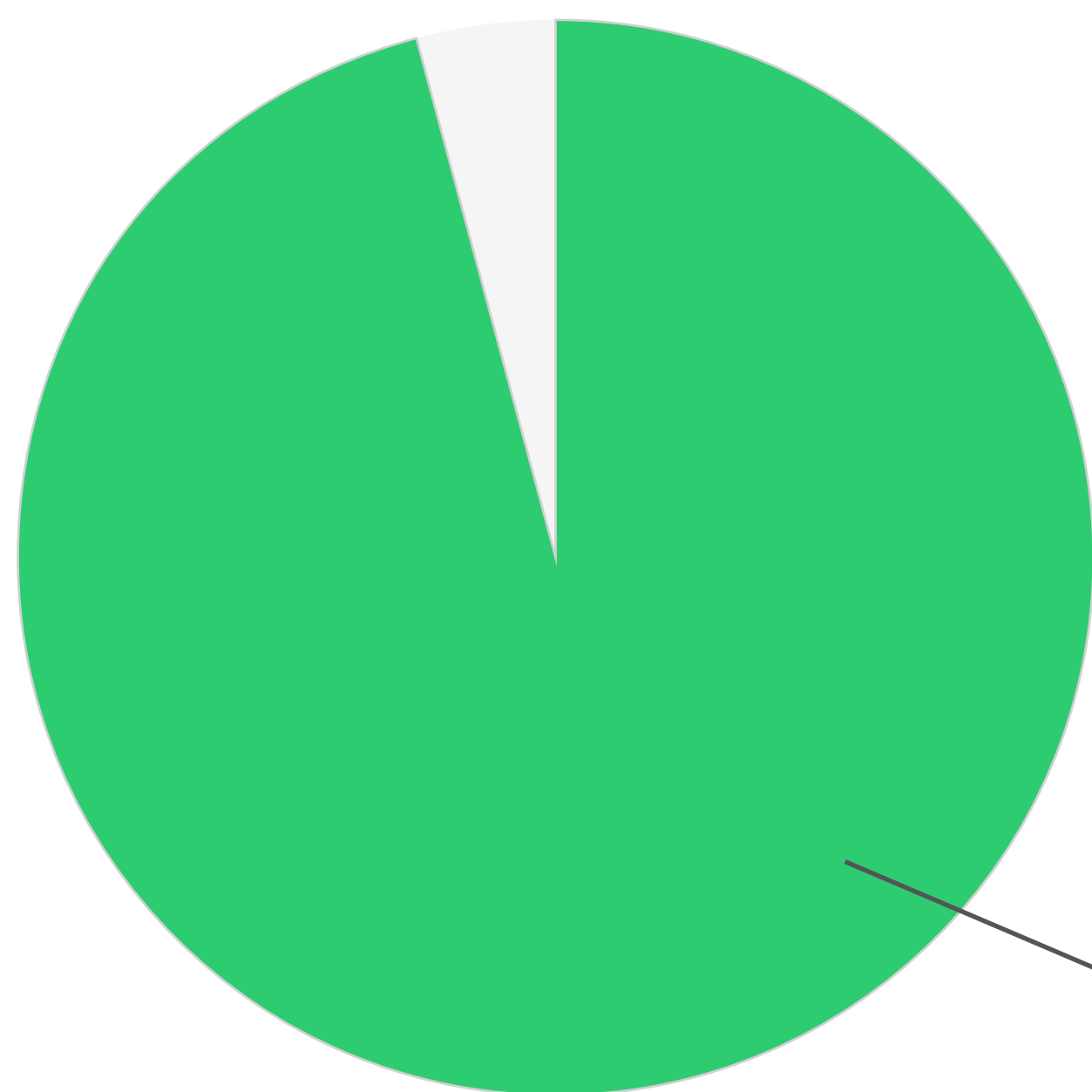
03 /

Assessment & Analysis

Visual Perception

PERFORMANCE

YOUR SCORE



96 /100

See above how many points you scored in the set of questions related to your **Visual Perception** skills.

Exceptional

Above Average

Average

Below Average

YOUR RANKING

Exceptional

See above how you fared against others who have taken the test.

03 /

Assessment & Analysis

Abstract Reasoning

ABOUT
STATISTICS
PERFORMANCE

ABOUT

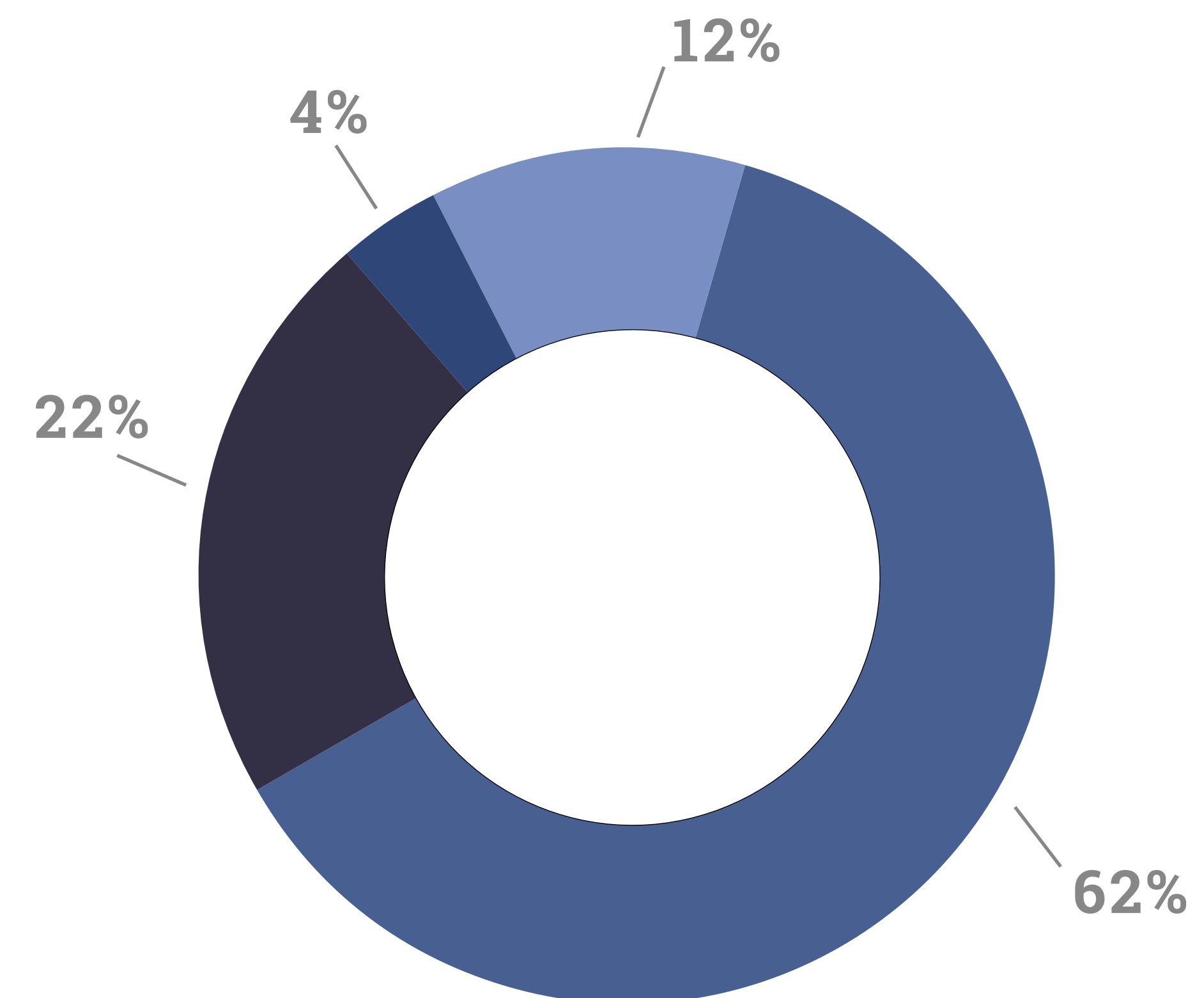
Abstract Reasoning is the ability to process abstract ideas and understand new concepts without relying on prior acquired knowledge.

The “Abstract Reasoning” set of questions evaluates your General Intelligence potential without allowing factors such as your educational level, social background or life experience to interfere with the results.

Abstract Reasoning questions are designed to measure your “fluid intelligence”, meaning your ability to quickly identify logical patterns, trends and rules when you are processing new information and apply this knowledge to solve complex problems.

Research has shown that abstract reasoning assessment has the highest precision rate for predicting potential success in a future job placement and is used by many HR departments during candidates screening process.

STATISTICS



1.2 Score Distribution in “Abstract Reasoning” set of questions

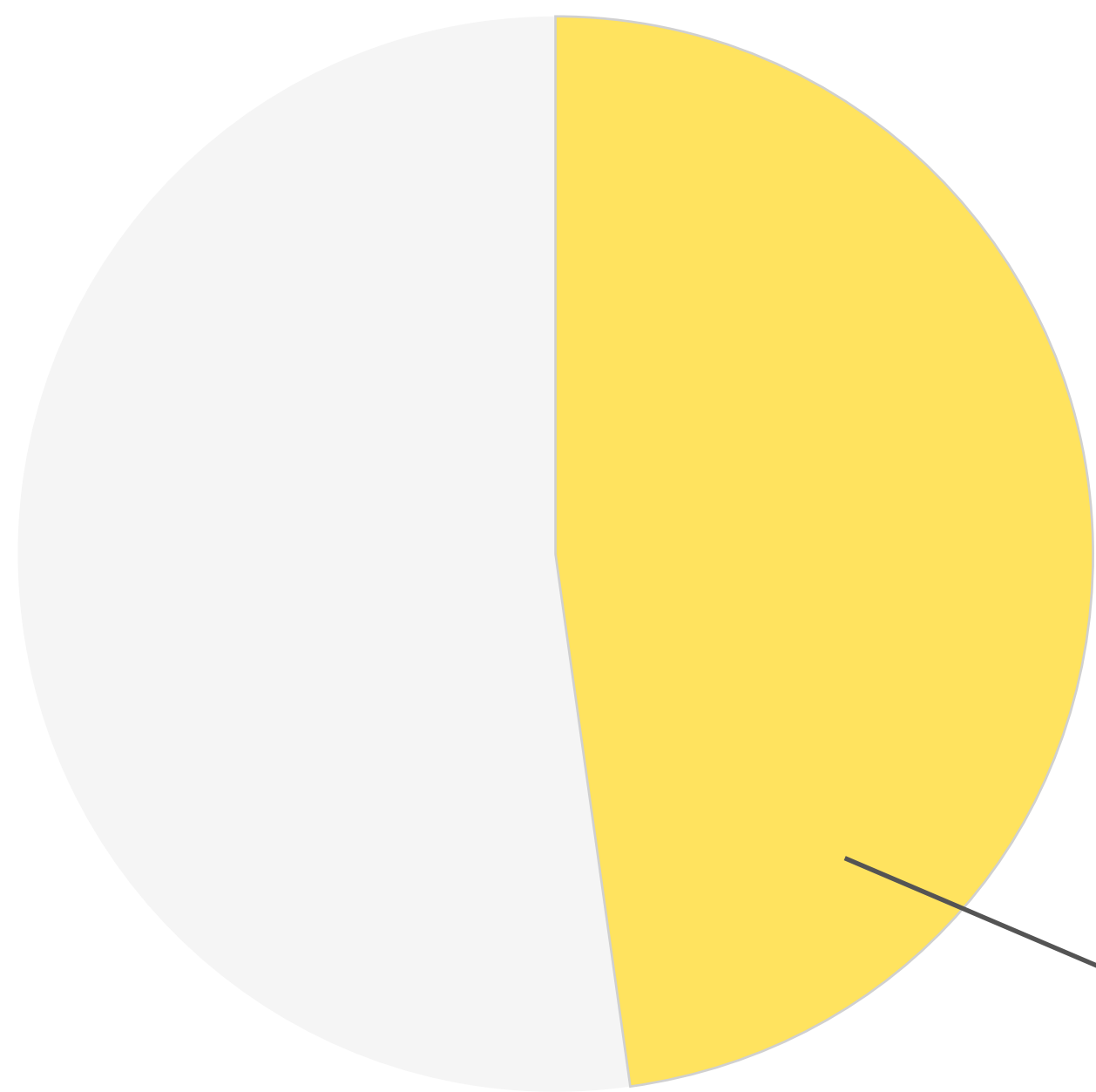
SCORES	0% - 15% (12%)	50% - 85% (22%)
	15% - 50% (62%)	85% - 100% (4%)

03 / Assessment & Analysis

Abstract Reasoning

PERFORMANCE

YOUR SCORE



48 /100

See above how many points you scored in the set of questions related to your **Abstract Reasoning** skills.

Exceptional

Above Average

Average

Below Average

YOUR RANKING

Average

See above how you fared against others who have taken the test.

03 /

Assessment & Analysis

Pattern Recognition

ABOUT
STATISTICS
PERFORMANCE

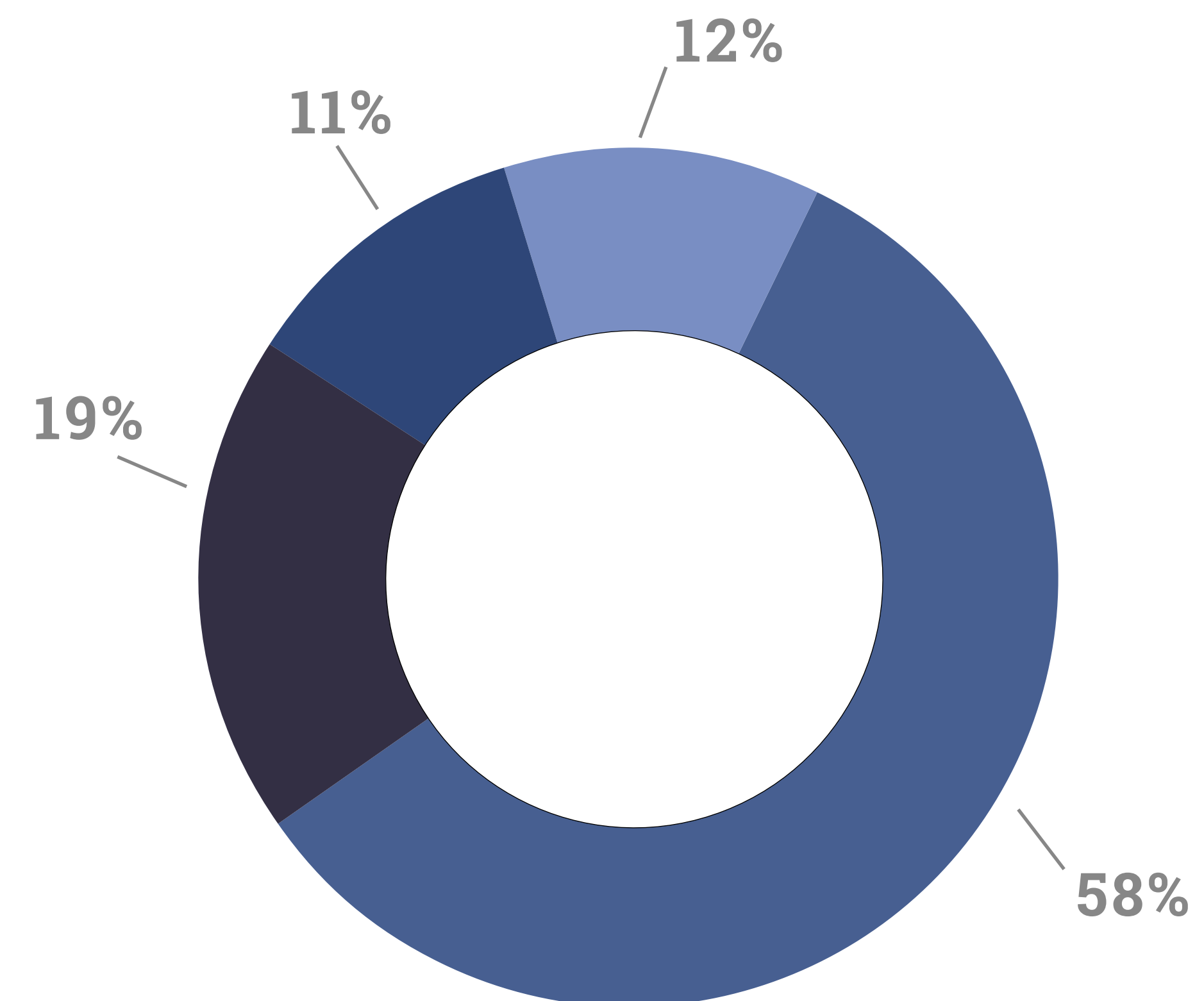
ABOUT

Pattern Recognition refers to the process of recognizing, identifying and categorizing complex arrangements of sensory stimuli into organised schemes in a way that facilitates memory storage and retrieval.

It is a spontaneous and automatic process that defines your ability to recognize order in chaotic environments. Pattern recognition is considered to be exceptionally linked to your General Intelligence level since it is determinant of your capacity to think logically and your ability to recognize and make sense of logical sequences

“Pattern Recognition” set of questions is designed to measure how quickly and easily you are able to recognize underlying mechanics of different situations and to identify certain connections between things.

STATISTICS



1.3 Score Distribution in “Pattern Recognition” set of questions

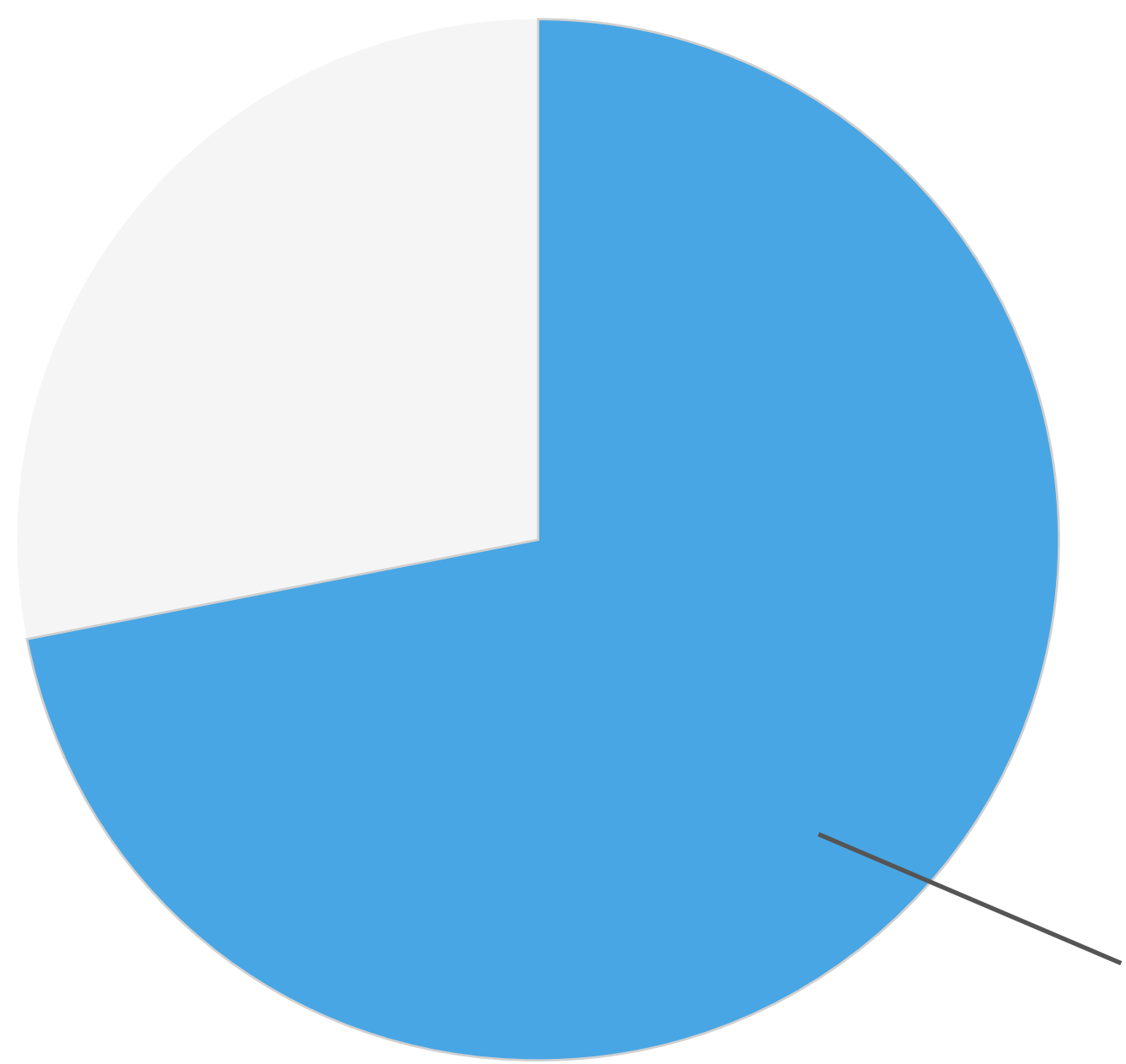
SCORES	0% - 15% (12%)	50% - 85% (19%)
	15% - 50% (58%)	85% - 100% (11%)

03 / Assessment & Analysis

Pattern Recognition

PERFORMANCE

YOUR SCORE



72 /100

See above how many points you scored in the set of questions related to your **Pattern Recognition** skills.

Exceptional

Above Average

Average

Below Average



YOUR RANKING

Above Average

See above how you fared against others who have taken the test.

03 /

Assessment & Analysis

Spatial Orientation

ABOUT
STATISTICS
PERFORMANCE

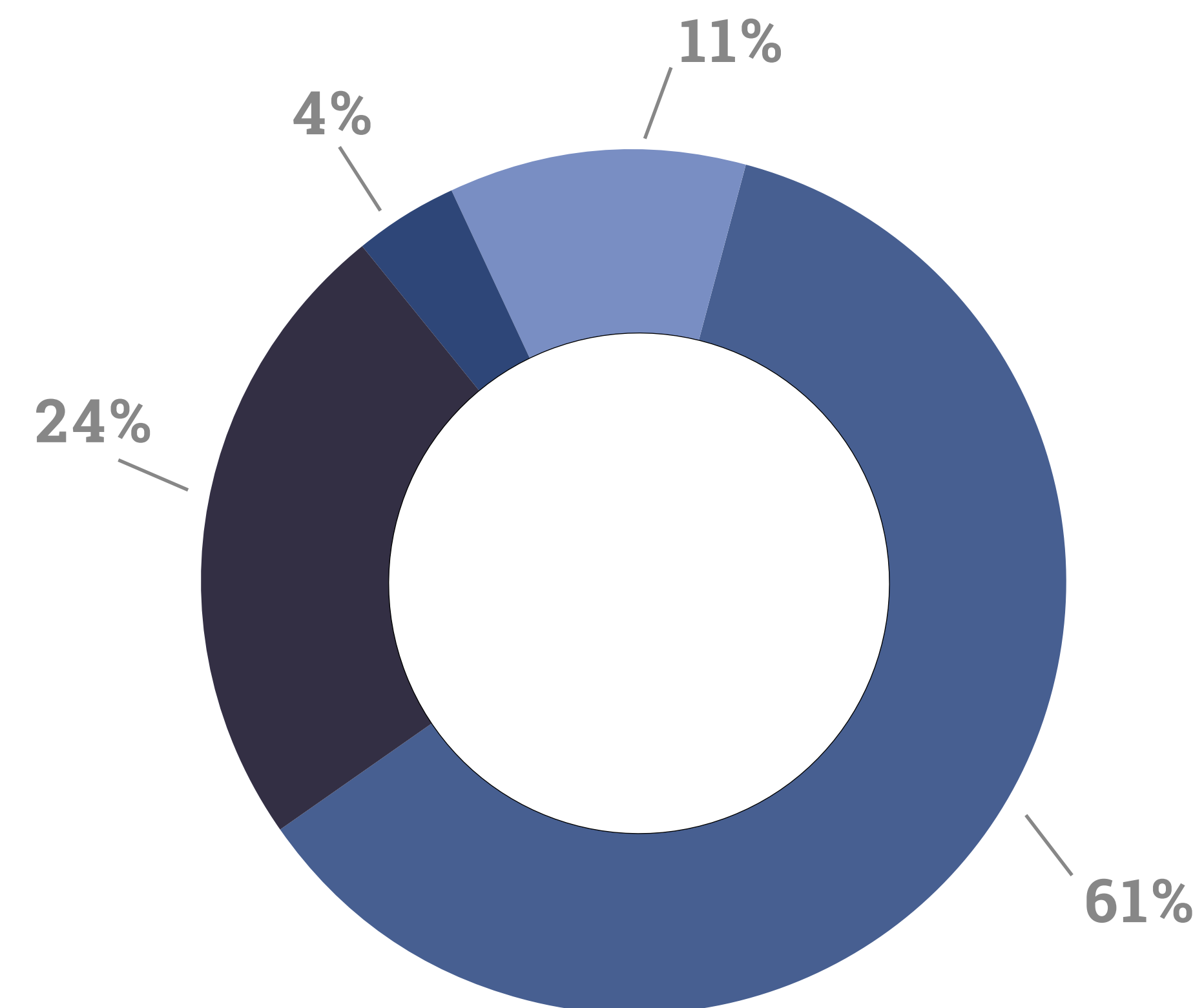
ABOUT

Spatial Orientation refers to the cognitive ability which allows you to understand spatial relations, meaning the ability to recognize and visualize the orientation of objects in space and make sense of their multiple relationships in a given environment.

The set of question related to your Spatial Orientation skills has been designed to assess the level of clarity with which you perceive space and the objects' positions or movements in it.

In this sense Spatial Orientation set of questions tests your “raw intelligence”, meaning cognitive skills which are not relying on prior acquired knowledge, and thus your performance in this assessment is a key determinant of your General Intelligence.

STATISTICS



1.4 Score Distribution in “Spatial Orientation” set of questions

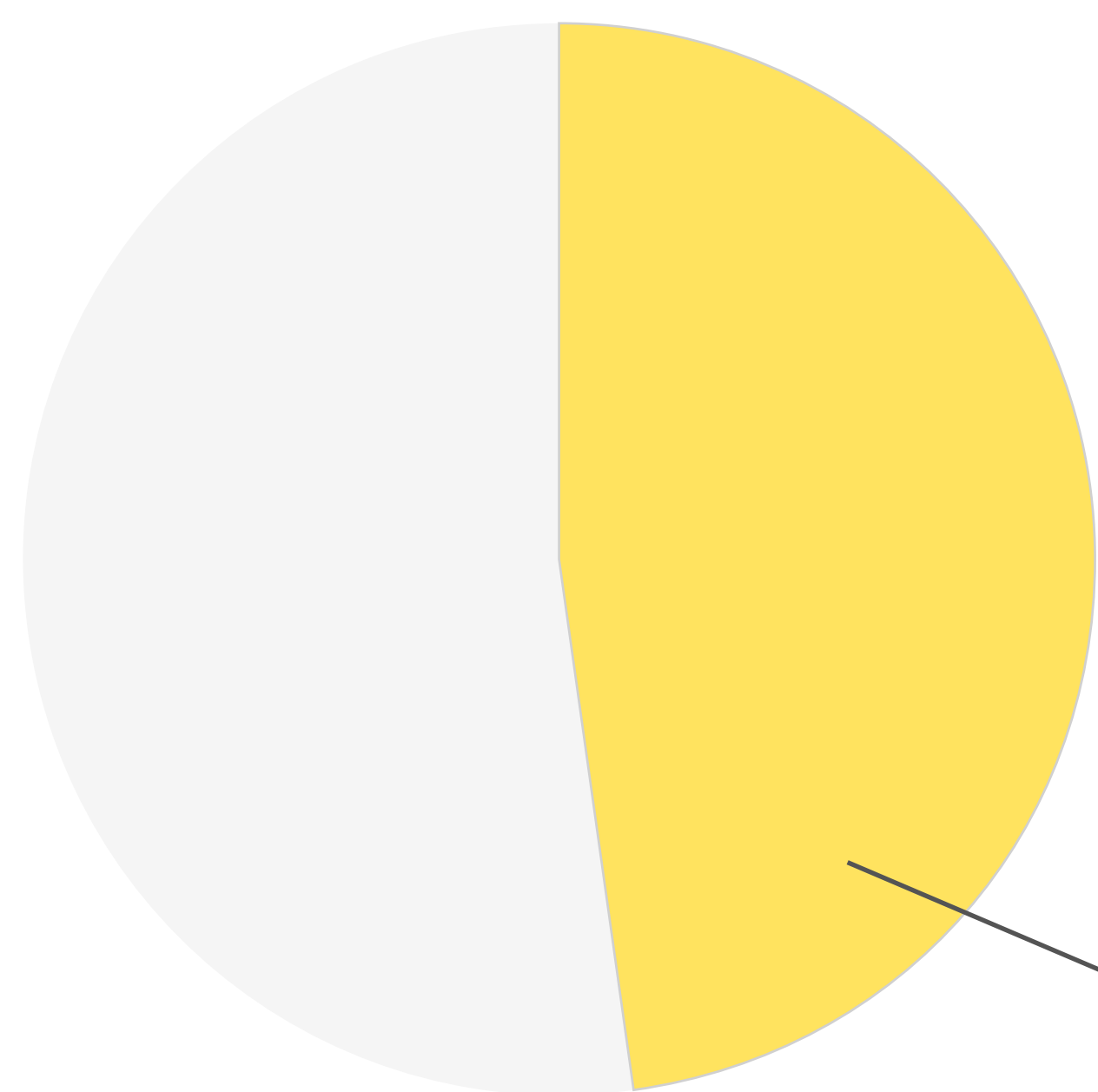
SCORES	0% - 15% (11%)	50% - 85% (24%)
	15% - 50% (61%)	85% - 100% (4%)

03 / Assessment & Analysis

Spatial Orientation

PERFORMANCE

YOUR SCORE



48 /100

See above how many points you scored in the set of questions related to your **Spatial Orientation** skills.

Exceptional

Above Average

Average

Below Average

YOUR RANKING

Average

See above how you fared against others who have taken the test.

03 /

Assessment & Analysis

Analytical Thinking

ABOUT
STATISTICS
PERFORMANCE

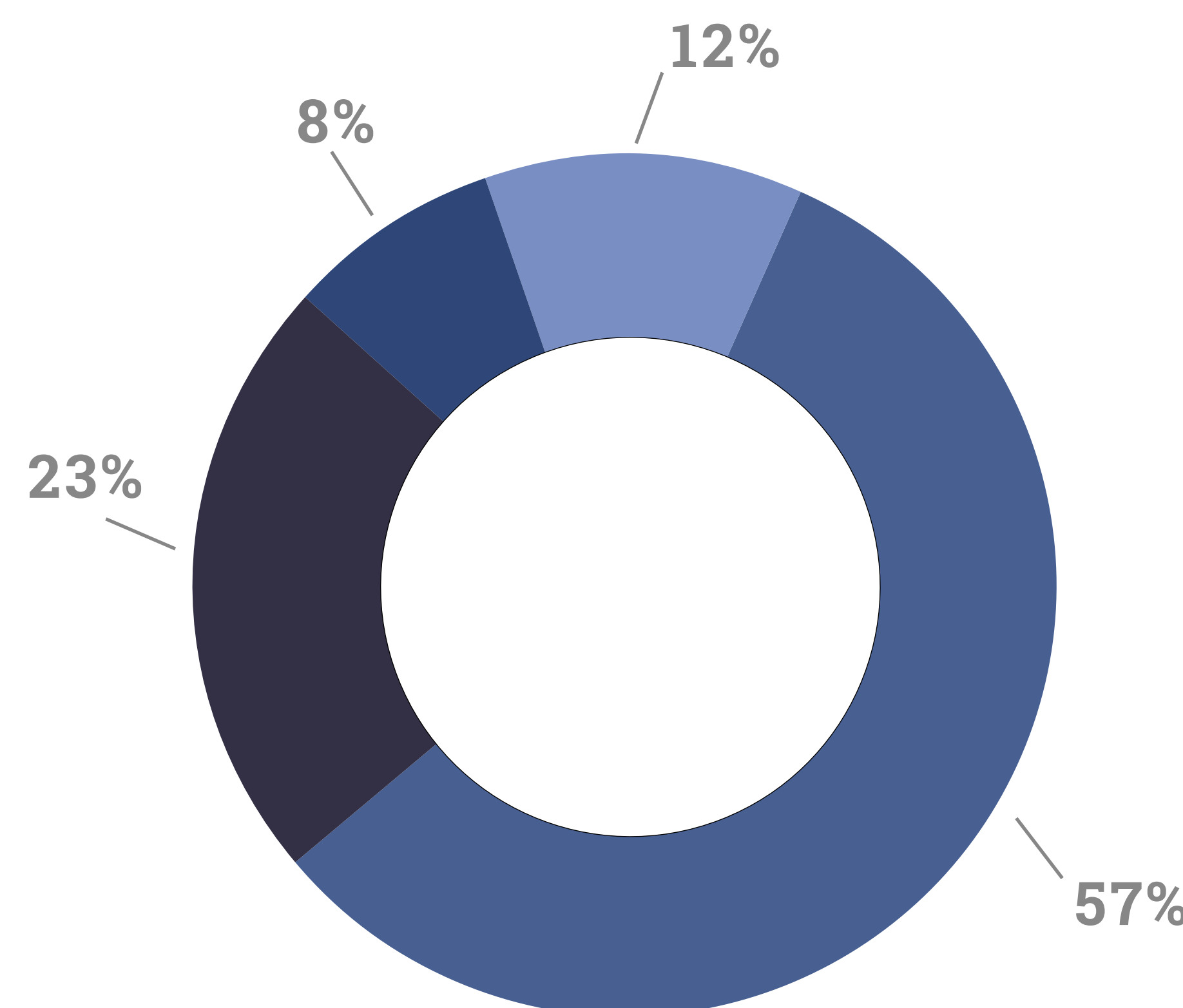
ABOUT

Analytical Thinking is the capacity to break down available information into smaller parts, and then evaluate and weigh-up those parts in order to form logical solutions to problems or make sensible decisions based on evidence.

Analytical thinking is considered to have the highest correlation with both problem identification and problem solving capacity. Your analytical thinking skills determine how quickly and efficiently you can identify problems and work out appropriate solutions.

Your analytical thinking assessment score indicates how efficiently you are able to analyze information and make informed decisions, which are cognitive skills that are considered crucial in academic, professional and personal success.

STATISTICS



1.5 Score Distribution in “Analytical Thinking” set of questions

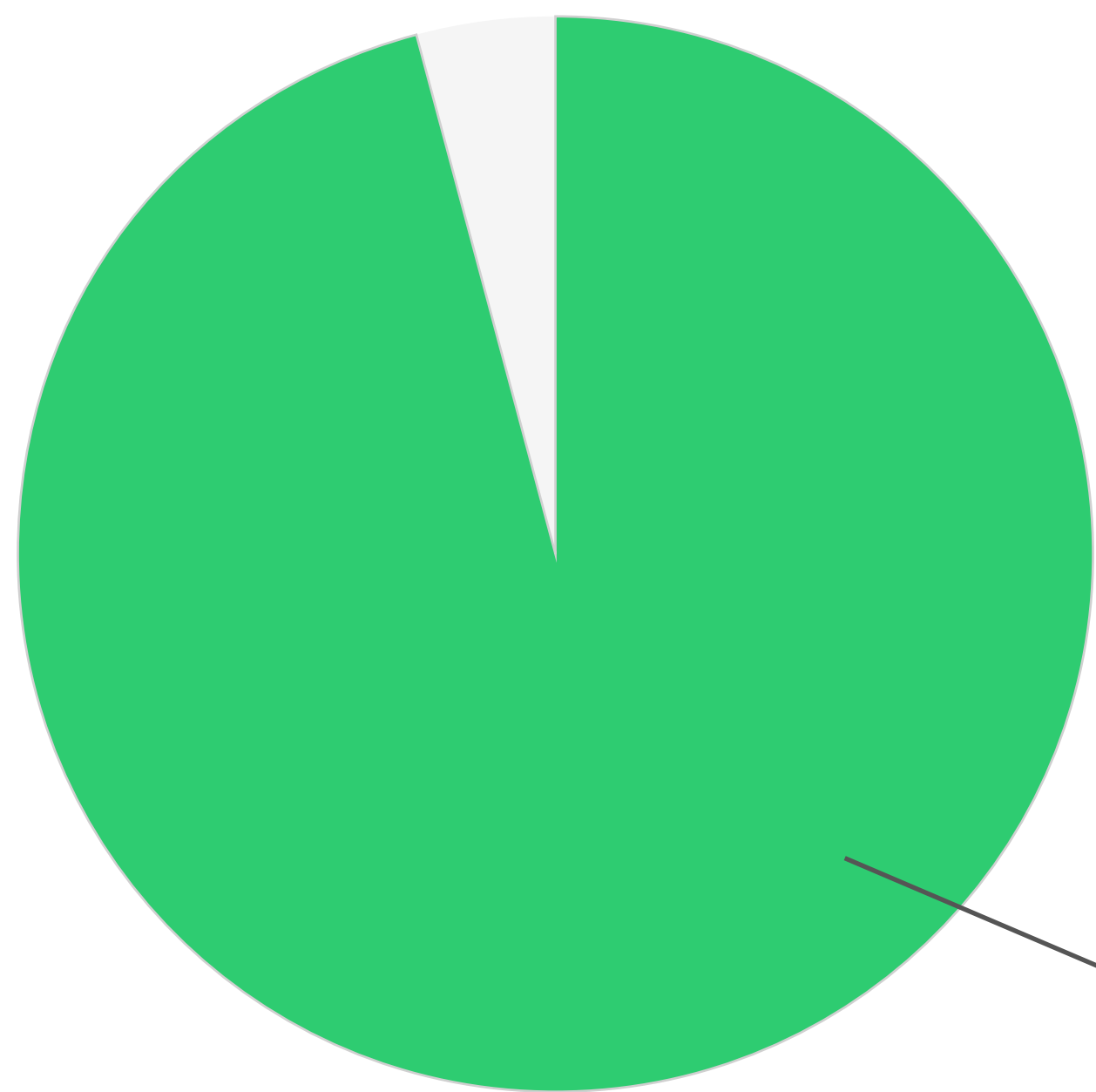
SCORES	0% - 15% (12%)	50% - 85% (23%)
	15% - 50% (57%)	85% - 100% (8%)

03 / Assessment & Analysis

Analytical Thinking

PERFORMANCE

YOUR SCORE



96 /100

See above how many points you scored in the set of questions related to your **Analytical Thinking** skills.

Exceptional

Above Average

Average

Below Average

YOUR RANKING

Exceptional

See above how you fared against others who have taken the test.

04 / Assessment Overview

YOUR IQ SCORE
YOUR RANKINGS

110

YOUR IQ SCORE

You scored higher than

74.57 percent

of the general population

YOUR RANKINGS

SET OF QUESTIONS	SCORE	RANKING
Visual Perception	96	Exceptional
Abstract Reasoning	48	Average
Pattern Recognition	72	Above Average
Spatial Orientation	48	Average
Analytical Thinking	96	Exceptional

05 /

Getting the full picture

Discovering your personality type

DOES YOUR IQ SCORE TELL THE WHOLE STORY
THE ROLE OF PERSONALITY TYPE
DISCOVERING YOUR TYPE

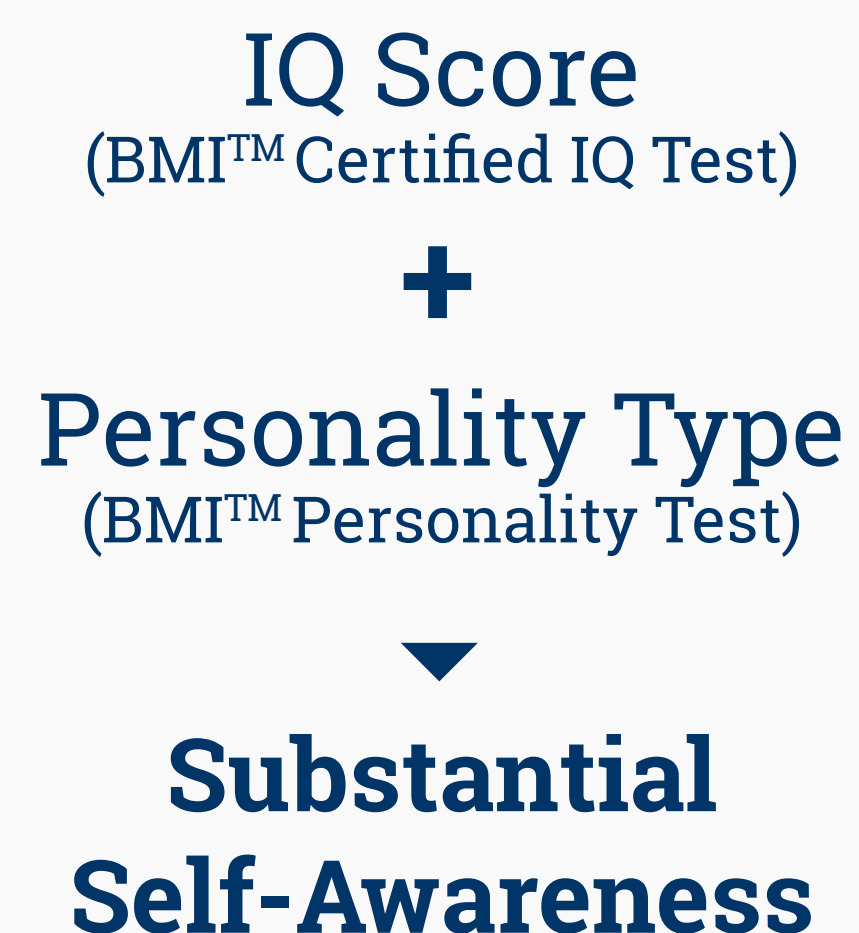
DOES YOUR IQ SCORE TELL THE WHOLE STORY?

By taking this IQ test you have completed an important first step towards substantial self-awareness. Your IQ score shows you where you stand, compared to other people in your age group.

It is always good to know where you stand, but what does this number actually tell us about our everyday life? Does scoring lower than average mean that you are doomed? Does achieving a higher than average score, or being extremely gifted mean that you are destined to succeed?

The answer is NO, it's not that simple. Although intelligence is a strong foundation for success in life, your IQ score does not say much out of context. There is more to better understanding yourself besides your IQ score.

It is a fact that a lot of people with impressive IQ scores have not made it as good in life as other hard-working, passionate achievers who may score a bit lower in the IQ scales.



What does this fact tell us? Our intelligence does not operate in a void. It is our personality that provides the context within which our intelligence is informing our decisions and actions.

There is a second, key element that along with our IQ score can give us a more complete picture of ourselves and help us take action in our everyday lives. It is our personality type.

05 /

Getting the full picture

Discovering your Personality Type

THE ROLE OF PERSONALITY TYPE

What is a personality type? Nothing more and nothing less than the group of your inborn tendencies next to characteristics and skills that you develop along the way.

People do not perceive the world identically, do not value the same things, do not have the same priorities, do not react the same or are interested in what interests each and everyone; they are 'different types'.

Your personality type is like a small **manual of yourself**. It highlights your strengths and weaknesses and gives you the advantage of acting on the basis of this wisdom. Knowing your personality type gives you crucial, actionable insights to help you grow as a person and reach your full potential in your work and life.

In other words, taking a **personality test** could be your second, more crucial step towards essential self-knowledge. It does not only reveal hidden strengths or help you identify your unique skills, but also gives you the information needed in order to unlock your full potential in both your personal and professional life.



05 /

Getting the full picture

Discovering your Personality Type

HOW TO DISCOVER YOUR TYPE

You can discover your personality type by taking our **BMI™ Personality Test**, the most popular online personality test, taken by millions of people in over 100 countries so far!

It is a complete, scientifically validated, research-backed personality assessment. It takes a few minutes to complete and is designed to accurately determine your personality type.

Have a look at the 16 Personality types. What do you think? Are you a **natural-born leader** like Abraham Lincoln, a **dauntless visionary** like Steve Jobs or maybe a **passionate caretaker** like Mother Teresa ?

Take the **BMI™ Personality test** now and find out!

<https://test-personality.org>

The 16 Personality Types

Diplomats



ENFJ

"MENTOR"

Extremely sociable idealists which always love to be of help.



ENFP

"MOTIVATOR"

Warm, outgoing idealists, always enthusiastic and energetic about their cause.



INFJ

"COUNSELOR"

Compassionate but opinionated listeners whose always insightful advice can prove to be invaluable.

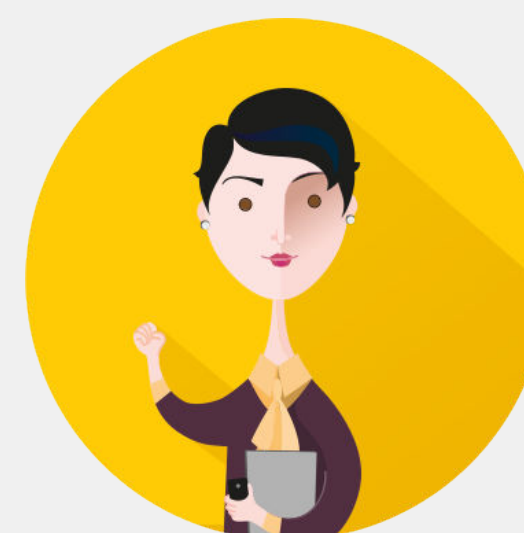


INFP

"IDEALIST"

Idealistic, humanitarian dreamers, living in their own world of values, beliefs and ideals.

Protectors



ESTJ

"SUPERVISOR"

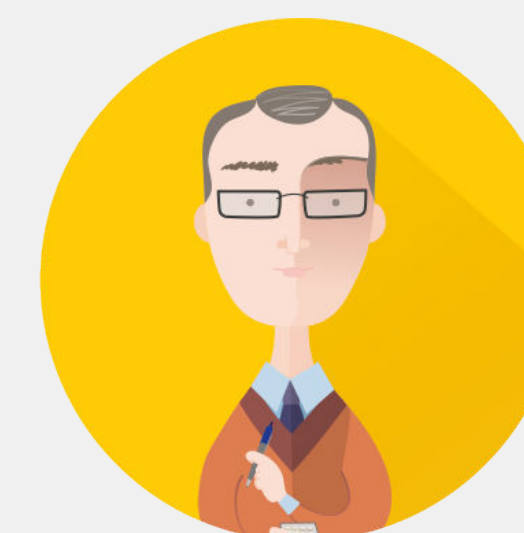
Strongly opinionated decision-makers who love order and stability.



ESFJ

"THE GIVER"

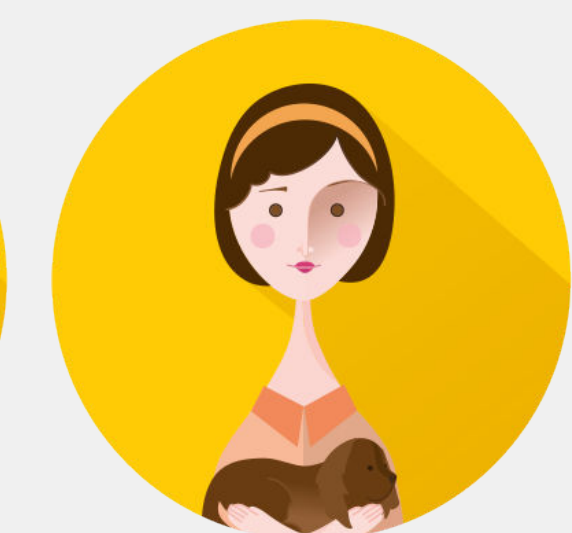
True extraverts, who love being around people and taking care of them.



ISTJ

"LOGISTICIAN"

Strongly practical achievers who like to play always by the rules.



ISFJ

"CARETAKER"

Practical, loyal and compassionate getting pleasure from taking care those in need.

BRAIN
METRICS
INITIATIVE

IQ Research
Personality & Intelligence Assessment Tools

www.test-iq.org
www.test-personality.org

BMI 2014 © All rights reserved